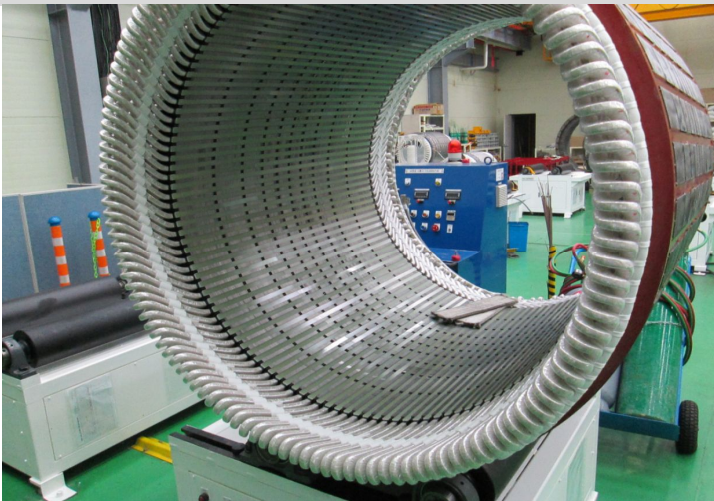




SUBMERSIBLE PUMP



WPIL LIMITED

INTRODUCTION

WPIL Limited, formerly known as Worthington Pump India Ltd., was established about 60 years back and has dedicated itself to the development of complete range of pumps and water handling systems.

Leveraging the hydraulic heritage of the world famous Worthington and Johnston brand and enhancing it with a sophisticated Research and Development Centre, the Company now possesses an enviable product range of Pumps and capability. Its Horizontal Pump range covers the large engineered Horizontal Split Case and Volute Pumps to the smaller End Suction Pumps.

The Pumps find applications in all spheres of Industry, Power, Irrigation and Municipal Sectors from Raw Water applications, Booster Pump Applications, Cooling Water Applications, Municipal Distribution Applications to Lift Irrigation Applications. These products are the market leaders in performance.

Based on WPIL's huge manufacturing capability including 4 foundries handling various metallurgies, these pumps can be supplied in all metallurgies from simple cast iron construction to exotic super duplex stainless steels and nickel alloys.

WPIL products are backed by a world class after sales team with trained personnel who can be deputed a short notice.

Today WPIL is truly an International Company with operations across the Globe.



The Company had following Historical Benchmarks during these long years :

1952	Johnston Pumps India - A JV of Johnston, US
1983	Worthington Pump India Ltd - JV of Worthington
1991	India's largest Cooling Water Pump
2003	Start of Turnkey Project Division
2010	Manufacture of Concrete and Metallic Volute Pumps
2011	Large Turnkey Projects for Water System of Power Plant
2011	WPIL International Formed
2013	Large order for 30000 KW Volute Pumps

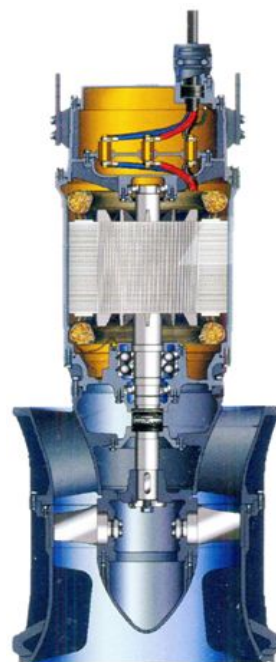
Coverage of Pumps

Technical Specifications :

- * Capacities up to 50000 cu.mtr./hr.
- * Heads up to 20 mtrs.
- * Motors upto 1500 kw and more.
- * Compact unit in mono-block design.
- * Wide range of duties.
- * With wet and dry motor options.

Applications :

- * Mine - Dewatering Systems for process and seepage water and for lowering of water level.
- * Dewatering of dams, flood prone areas.
- * Pumping activated sludge and raw, untreated, highly turbid water.
- * Lift Irrigation as water lift pump from low-level water sumps.
- * Pumping waste, storm, service and cooling water.



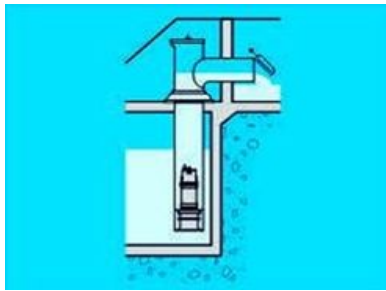
Flow : Upto 50,000 M³/Hr

Head : Upto 25 M

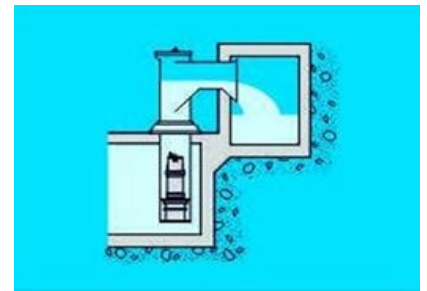
Motor : Upto 1500 HP



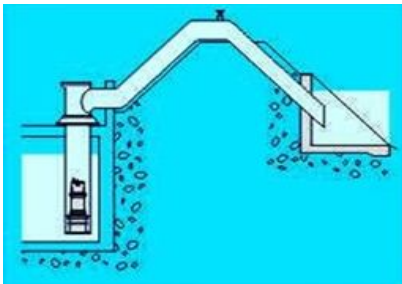
Suitable where the liquid is pumped to a tunnel, channel or basin with a water level that is nearly constant so that shut-off devices are not required.



If the water level on the outlet side of the pump varies considerably flap valves can be installed.



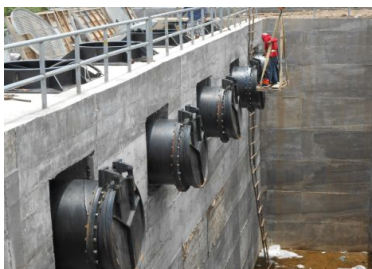
If odors require a closed system, this arrangement can be used with a free discharge, as shown, in order to prevent from water backflash.



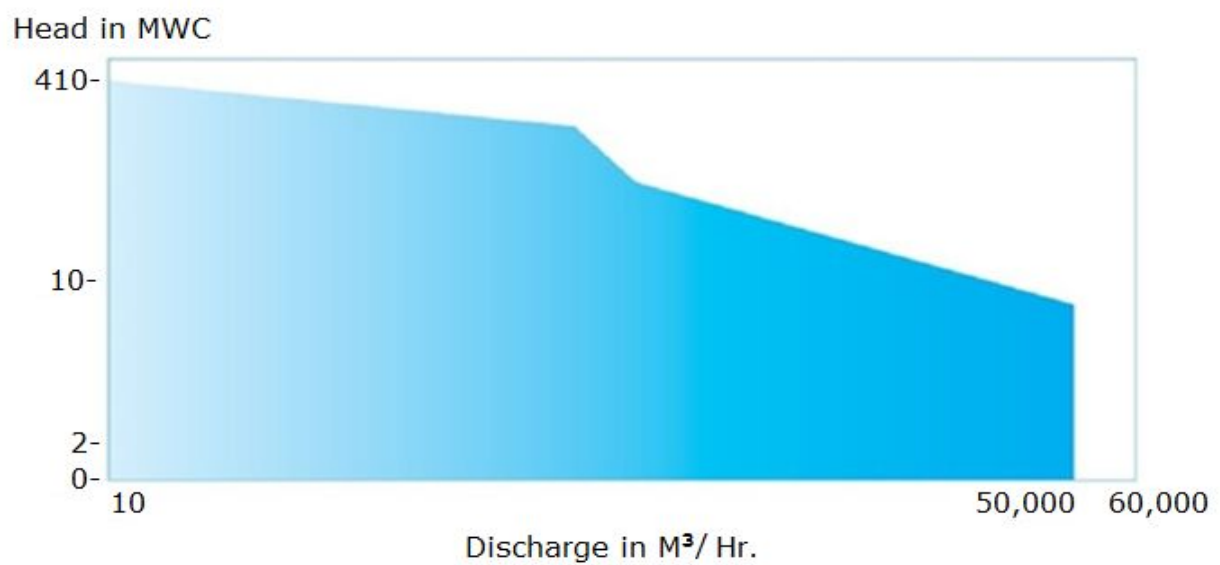
In this case the pump is placed in a suspended steel column with



If the pump is to work in combination with a siphon or a discharge line, a pressure-tight discharge elbow must be used.



Range Chart



Coverage of Pumps - Multistage

Range Available to Meet Every Need :

Size : 6" - 38" in bowl diameters or 4" - 30" diameter impellers.

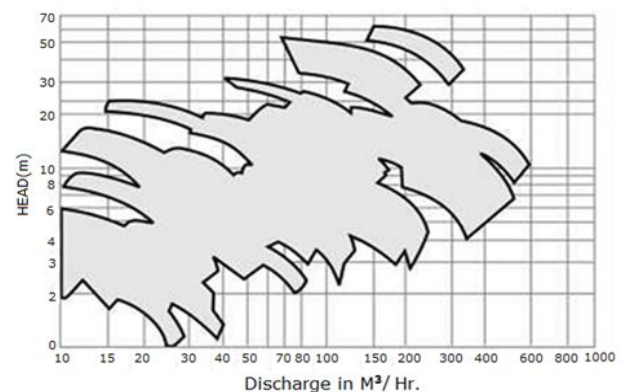
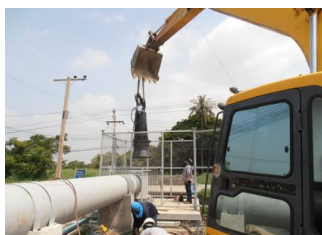
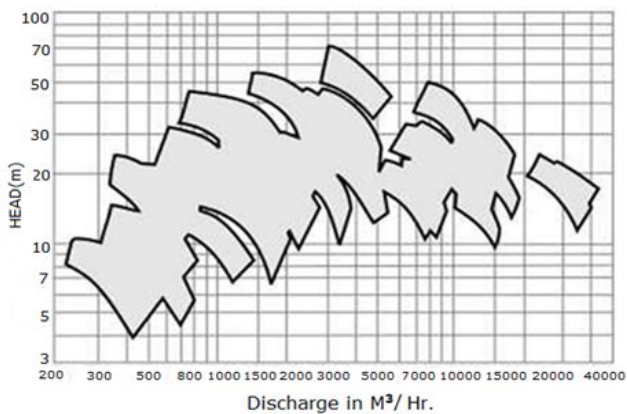
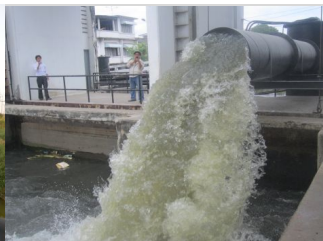
- * Capacities from 6 through 40,000 cubic meter per hour.
- * Heads up to 80 mtrs.
- * Discharge sizes from 2" through 30".
- * Motors to 1500 HP / 380 - 6600 V / 3 Ph, 50 or 60 Hz AC.
- * Standard temperature operation to 105°F (40°C) as well as warm liquid operation to 150°C oil filled motor.
- * With wet and dry motor options.

Applications :

- * Mine - Dewatering Systems for process and seepage water and for lowering of water level.
- * Dewatering of dams, flood prone areas.
- * Pumping raw untreated water.
- * Lift Irrigation as water lift pump from low-level water sums.
- * Simple Modernization of old V.T and bore-well submersible pumps.

Choice of Materials :

- * Pump casing - Cast Iron / Stainless Steel - up to Super Duplex / Ni-Al-Brnz.
- * Impeller - Stainless Steel - up to Super Duplex / Ni-Al-Bronze / Other bronze.
- * Shaft - Stainless of various grades : 410/420/316/Duplex & Super Duplex.
- * Motor Body - Mild Steel / Stainless Steel - up to Super Duplex / Ni-Al-Bronze
- * Casing Tube surrounding the motor (optional) - Mild steel / Stainless.
- * Rotor Shaft - Steel / Stainless Steel.
- * Winding Wire - PVC Insulated Copper / XLPE insulated Copper.
- * Thrust Bearings - Stainless Steel.
- * Bush Bearing - Carbon.



Note :
Designs subject to change.
Other sizes and options available as per requirement.

DEWATERING PUMP – M , G & WQDWS SERIES



Flow : Upto 1,000M³/Hr

Head : Upto 100 M

Motor : Upto 200 HP



WPIL LIMITED

SEWAGE PUMPS– MS SERIES



Flow : Upto 6,000 M³/Hr

Head : Upto 70 M

Motor : Upto 500 HP

INSTALLATION LIST

- Hua Ko Station, Samut Prakan Provincial Administration, Thailand.
- Demangan BBWS Solo Flood control, Indonesia.
- Bang Ta Nai and Bang Sai station, Royal Irrigation Department, Nonthaburi, Thailand
- Bang Lane Station, Royal Irrigation, Nakhon Pathom, Thailand.
- Kud Chiang Sa Station, Royal Irrigation Department, Roi Et Province, Thailand.



WPIL LIMITED

INTERNATIONAL OPERATIONS

THAILAND

WPIL (Thailand) Co. Ltd., 23 soi Sathiyuttakam 3, T.Thasai A. Muang, Nonthaburi 11000, Thailand
Tel : +66 (2) 952 2561, Fax : +66 (2) 952 3273, Email : Supaporn.t@wpil.co.th; jeerasith.k@wpil.co.th; jirawich.k@wpil.co.th
Website : www.wpil.co.th

AUSTRALIA

Sterling Pumps Pty Ltd., 14 Shamet Circuit, Pakenham, Victoria, 3810, Australia
Tel : +61 3 9729 5044, Fax : +61 3 9729 3522, Email : anton@sterlingpumps.com.au; brian@sterlingpumps.com.au
Website : www.sterlingpumps.com.au

UK

Mathers Foundry Limited, Park Works, Grimshaw Lane, Newton Heath, Manchester M40 2BA, UK
Tel : +44 (0) 161 954 4347, Fax : +44 (0) 161 205 2455, Email : sales@mathersfoundry.co.uk
Website : www.mathersfoundry.co.uk

SOUTH AFRICA

A.P.E Pumps (Pty) Limited., 26 Nagington Road, Wadeville, Germiston, South Africa
Tel : +27 11 824 4801, Fax : +27 11 824 2770, Email : alan@aepumps.co.za; sonja@aepumps.co.za
Website : www.aepumps.co.za; www.matherandplatt.com

WPIL SERVED



OUR OFFICES

KOLKATA ■ DELHI ■ MUMBAI ■ CHENNAI ■ HYDERABAD ■ BARODA ■ BANGALORE ■ BHUBANESHWAR
BANGKOK ■ MELBOURNE ■ JOHANNESBURG ■ MANCHESTER



WPIL LIMITED

CORPORATE & REGISTERED OFFICE

"Trinity Plaza", 3rd Floor, 84/1A, Topsia Road (South),
Kolkata - 700046, (India)

Phone : +91 33 3021 6800

Fax : (91 33) 3021 6835

www.wpil.co.in